



GEARGRID GridIron Locker Mobile System

Assembly Instructions & Owners Manual

Thank you for choosing the Geargrid GridIron Mobile Locker System. Geargrid is committed to high quality products and your complete satisfaction.

Please read this manual before you start the assembly. Call us at 888-643-6694 if you encounter any assembly or product performance problems.

Before You Begin:

NOTE: Two person assembly is required.

Assembly Preparation:

- Open and remove contents from all boxes
- Check all parts against the parts list
- Organize parts by type
- Locate a clear, level floor
- Lay the shipping carton cardboard on the floor and assemble the unit on it to protect unit from floor damage during assembly.

Tools Required:

- Rubber Mallet
- 3/8", 7/16", and 9/16" sockets with ratchet
- 1/4" and 5/32" Hex Allen Wrench



Warranty Information: GEARGRID Wall Mount Lockers are guaranteed to be free of material and workmanship defects for one full year from the date of purchase. GEARGRID guarantees to repair or replace defective materials, without charge. To file a claim call our Customer Service department at 888-643-6694. If product return is necessary your Customer Service representative will authorize the return and make arrangements to replace the defective parts. This is your sole GEARGRID warranty. GEARGRID disclaims all other warranties, including the warranty of merchantability and fitness for a particular purpose, as well as all liability for incidental, consequential, special and indirect damage. GEARGRID liability shall be limited to the amount you paid for the product under warranty. GEARGRID reserves the right to make product changes without obligation to incorporate such changes into products previously sold. Some states do not allow the exclusion or limitation of damages or warranties, so the above may not apply to you. This warranty gives you specific legal rights. You may also have other rights which may vary from state to state. GEARGRID products are covered by U.S. patents: 6,241,107; D 636,202; D 635,810



THANK YOU FOR CHOOSING GEARGRID for smarter, stronger, storage solutions.
Setting the standard for craftsmanship, quality, and service.

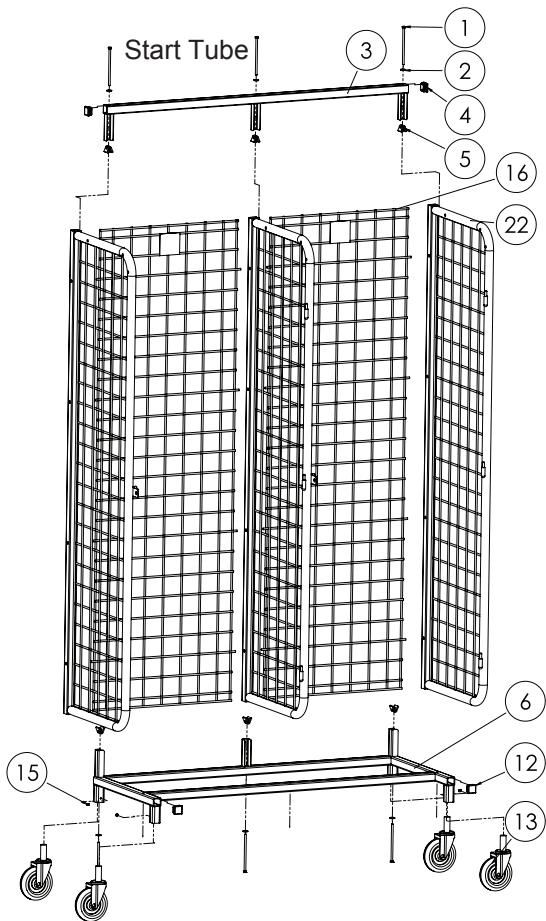
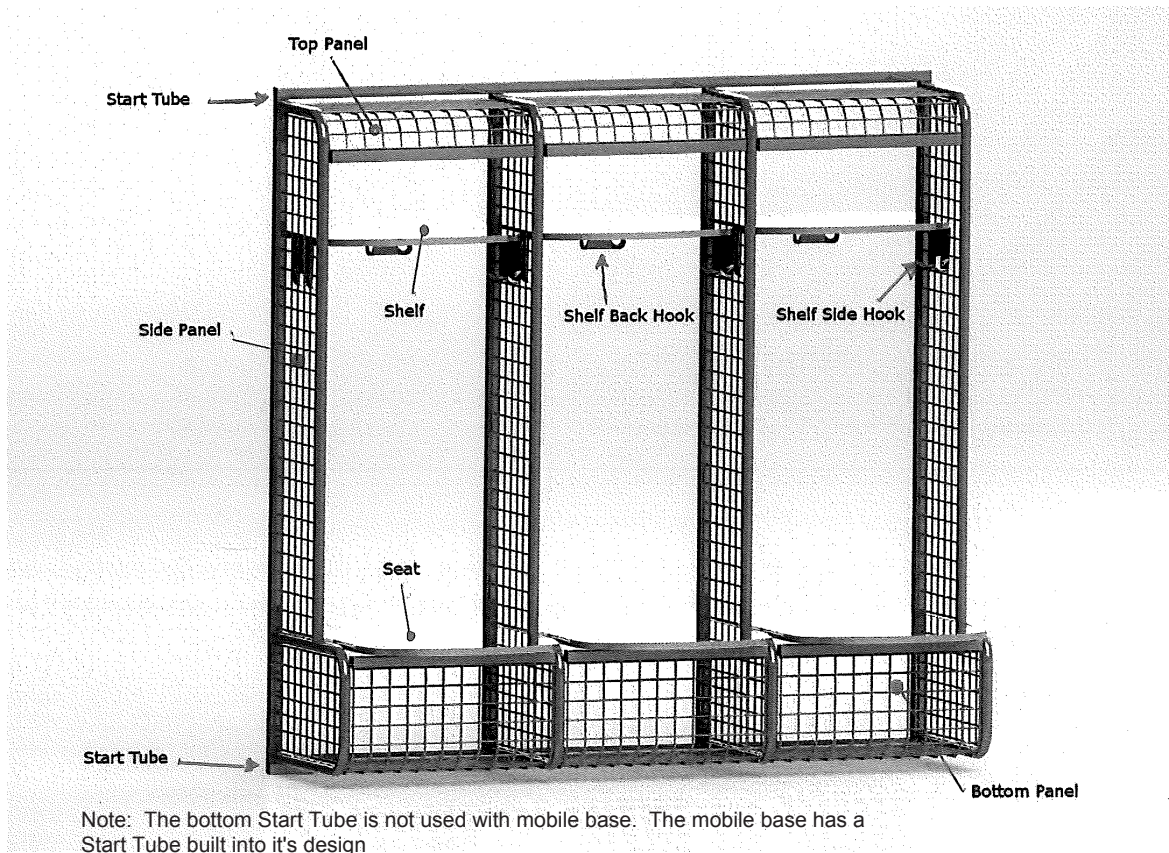
For general parts or assembly assistance: 651-464-4468 or toll free 888-643-6694

For accessory inquiries: sales@geargrid.com or 651-464-4468, toll free 888-643-6694

For our versatile product line, specifications and resources for custom solutions: www.geargridcorp.com

670 SW 15th Street, Forest Lake, MN 55025 | Toll Free: 888-643-6694 | 651-464-4468 | Fax: 651-464-4780
sales@GearGrid.com | www.geargridcorp.com

Parts



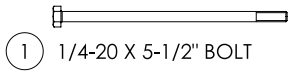
Notes

The image to the left shows the general concept of locker assembly...not indicative of this particular lockers style. Mobile Base and Casters will look slightly different than picture at left. Caster plate will mount to base with 4 bolts. Back bolt will be Blot, Wedge Nut and Washer assembly.

Parts

Notes

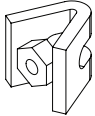
Below is the part list for the standard unit without doors.



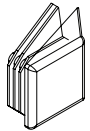
1 1/4-20 X 5-1/2" BOLT



2 1/4" FLAT WASHER



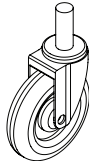
5 WEDGE NUT



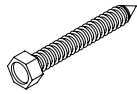
4 1-1/4" SQ. 16 GAUGE PLUG



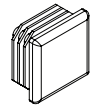
15 1/4-20 X 3/8" SET SCREW



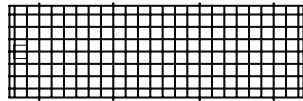
13 CASTER



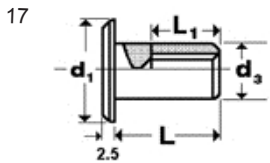
14 #14 SHEET METAL SCREW



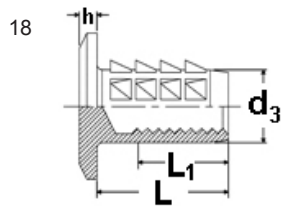
12 1-1/4" SQ. 11 GAUGE PLUG



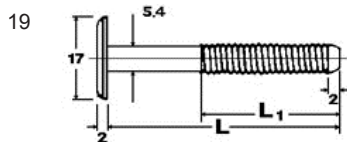
16 BACK PANEL



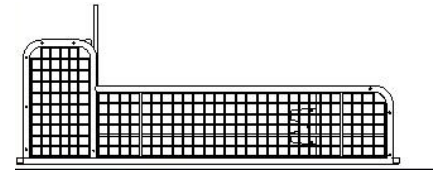
17 Joint Connector Nut - Nickel 1/4-20



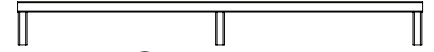
18 Insert Nut - Nickel 1/4-20



19 Joint Connector Bolt - Nickel 1/4-20



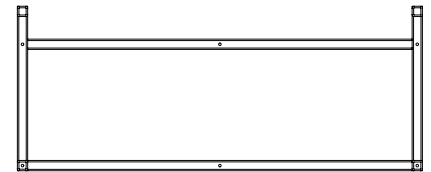
22 STANDARD SIDE



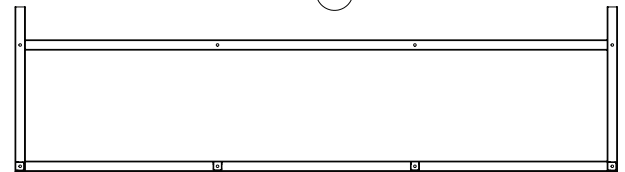
3 2-START TUBE



3 3-START TUBE



6 2-PACK BASE



6 3-PACK BASE

Assembly

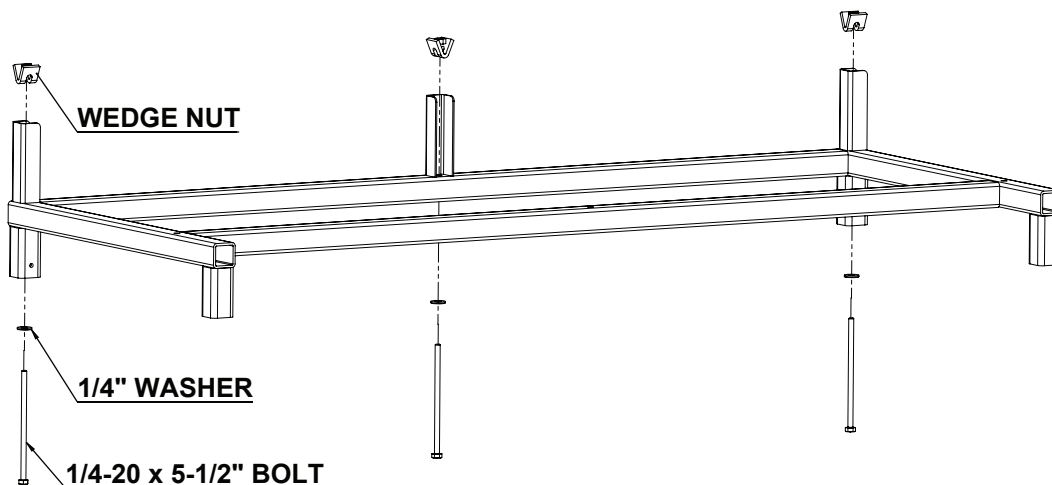
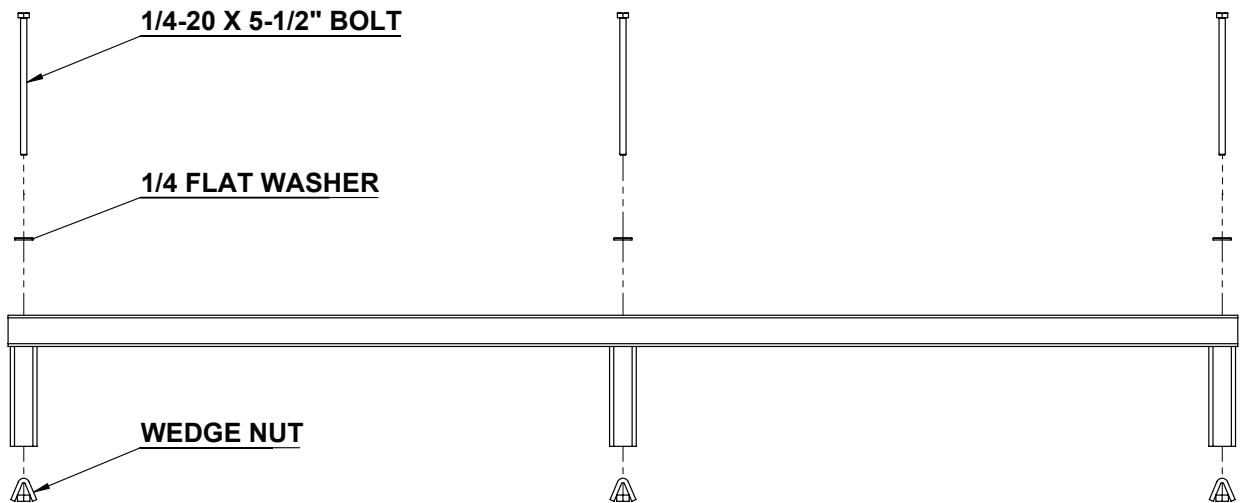
* Indicates steps involving optional door assembly

STEPS

- | | |
|--|--|
| 1) Assemble start tube and base hardware | 5) Fasten side panel to base |
| 2) Mount side panels to base | 6) Install casters or floor mounting options |
| 3) Install back panels (Install Tops and threaded rod *) | 7) Shelf and apparel hook installation |
| 4) Install start tube | 8) Door installation* |

1) Assemble Start Tube and Base Hardware

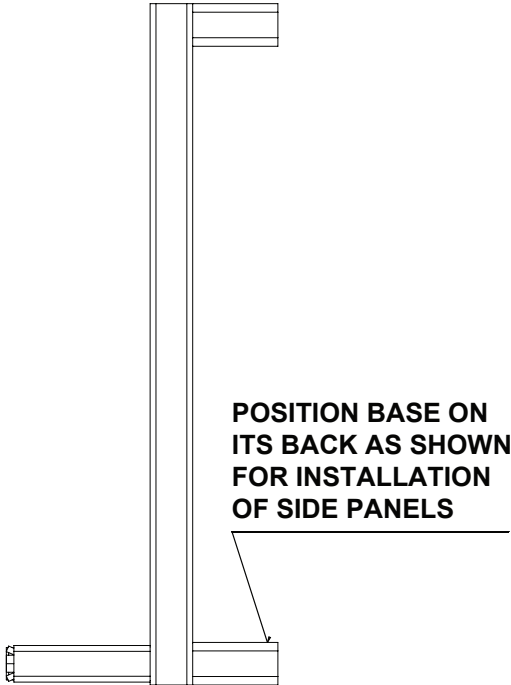
Step 1a: Locate the following items: start tube (they can be a 2-start or a 3-start depending on your order), wedge nuts, 1/4-20 x 5-1/2" bolts, 1/4" flat washers. Install the bolt with the washers through each start tube into the U-channels and thread on the wedge nuts as shown. **WEDGE NUTS MUST BE ORIENTED AS SHOWN.** Do not tighten bolts at this time. Follow the same procedure for the base.



Assembly

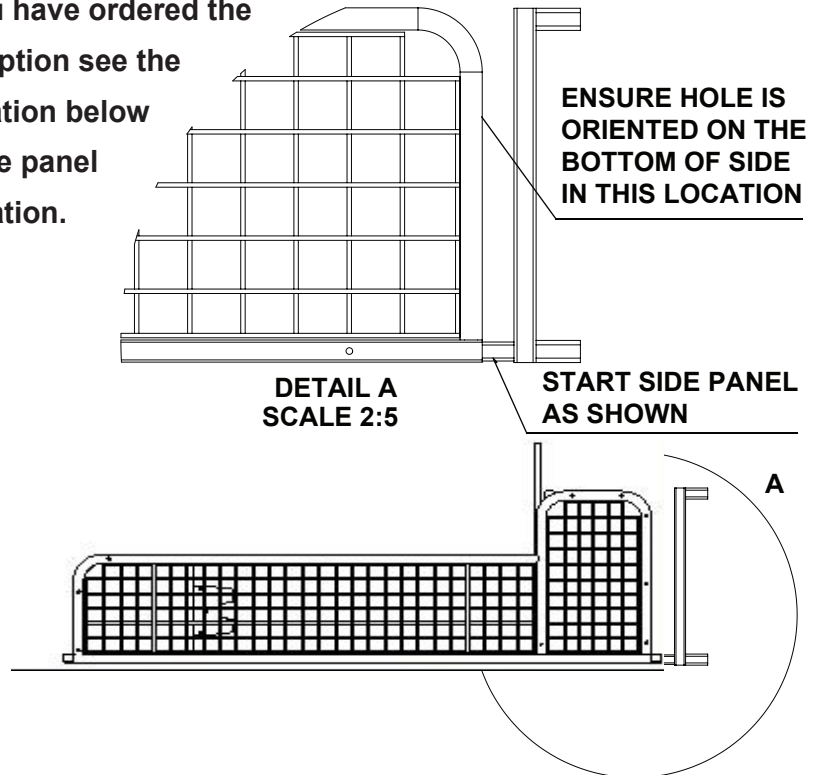
2) Mount Side Panels to Base

Step 2a: Position base on its back as shown in the diagram at left..



Step 2b: Position a side panel so the hole on the bottom of the round tube is located at the base. Slide the side panel over the U-Channel as shown. Do not slide the side panel all the way down on the base at this point. **Ensure the side panels short wires are facing right. The shelves will not fit properly if the sides are oriented incorrectly.** Install the remaining sides per the instructions.

* If you have ordered the door option see the illustration below for side panel orientation.



2C: Once first side panel is slid into mobile base start as indicated in Detail A, the Top and Bottom Panels need to be inserted into holes in side panel frame before inserting the next side panel into the mobile base start.

Assembly

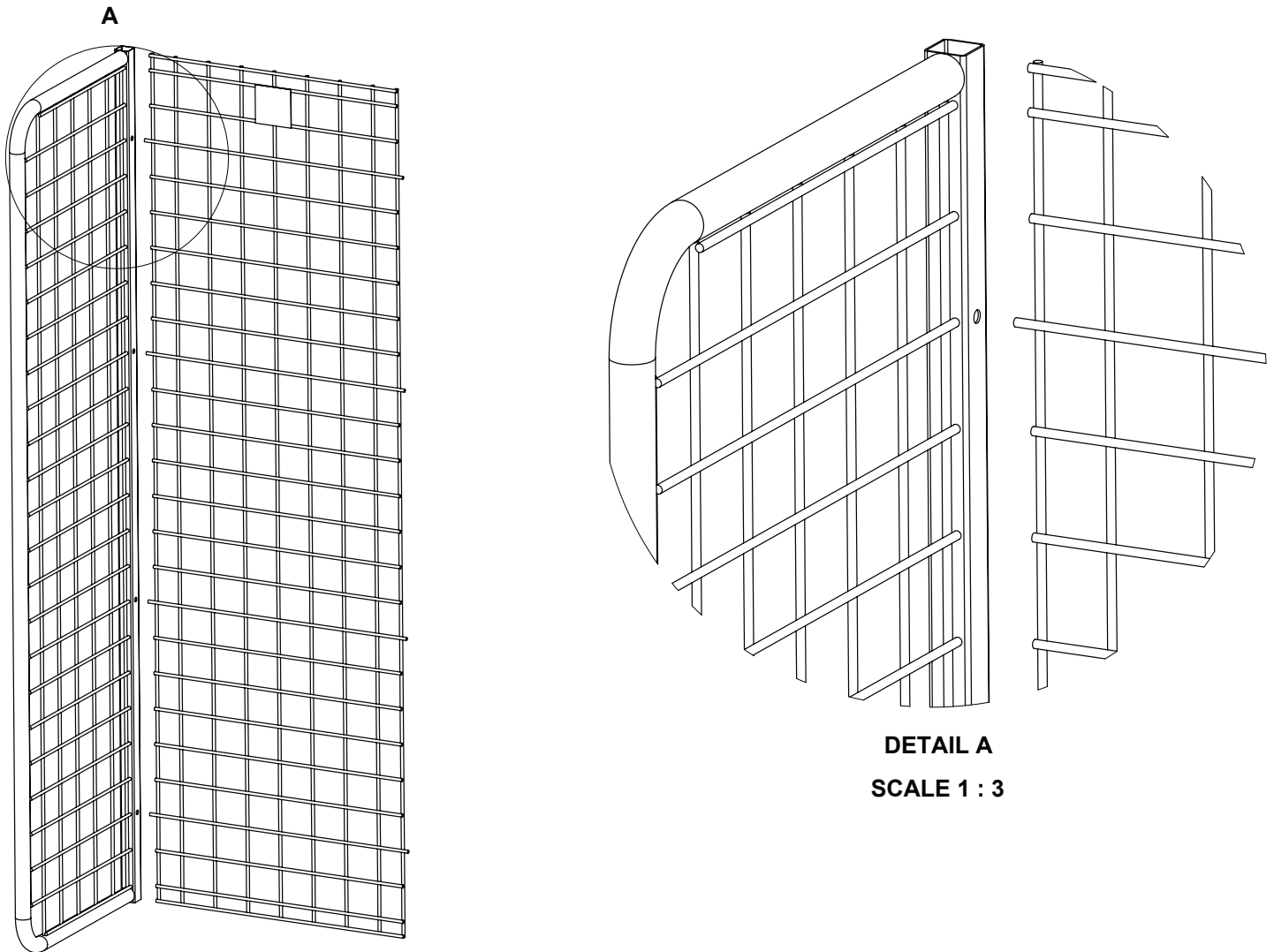
3) Install Back Panels (ONLY IF BACK PANELS INCLUDED IN ORDER)

Step 3a: Slide the side panels out enough to allow the back panel to be placed into position.

The extended wires on the back panels will mate into the holes on the side panel tubes.

Place all panels into position with the GearGrid logo at the top and the short horizontal wires facing up.

*** If you have ordered the door option, install the tops now. Use the same process as above and then install the threaded rod through all tops and side panels then thread on the two castle nuts.**

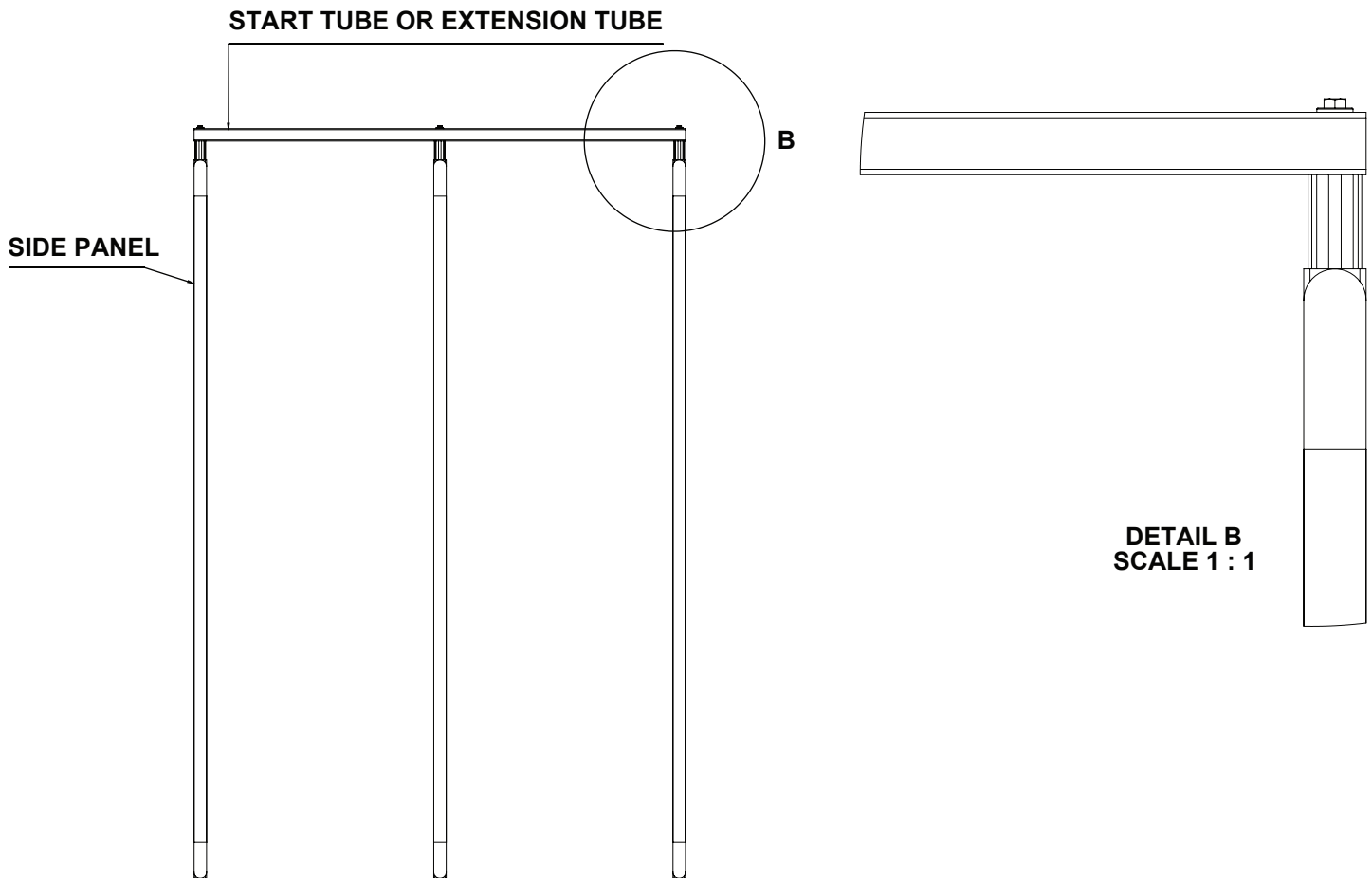


Assembly

Step 3b: Once the Side Panel, Top Panel, Bottom Panel and Back Panel(If included) are in position it is now time to seat those components all the way down on top of the base.

4) Install the Start Tube

Step 4a: Slide the start tube U-channels into the side panels as shown in the diagram below. **Ensure the side panels short wires are facing right, the shelves will not fit properly if the sides are oriented incorrectly.** Tighten the bolts, do not overtighten.



5) Fasten the Side Panels to the Base

Step 5a: Install the #14 sheet metal screws up through the bottom of the base and into the bottom of each side. Tighten these screws.

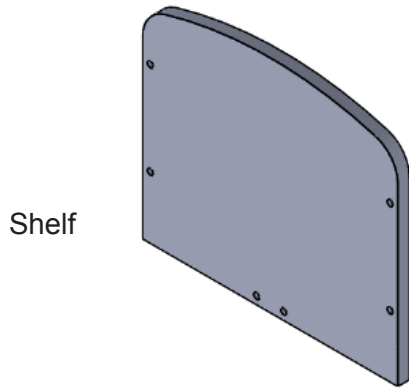
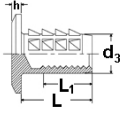
6) Install casters or floor mounting options

Step 6a: Install the casters into the base legs and install the 1/4-20 x 3/8" set screws into the back of the base legs. Ensure the casters are pressed all the way up when the tightening the set screws. Tip fully assembled base unit up onto its casters.

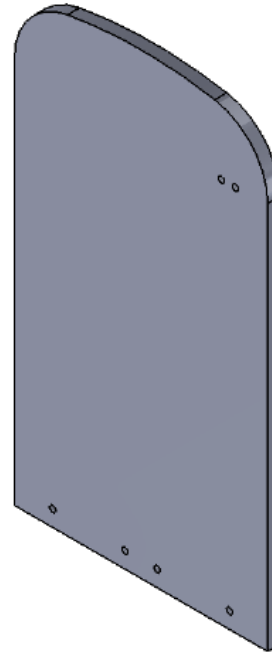
Assembly

7) Shelf and Apparel Hook Installation

Step 7a: Press #18 Insert Nut - Nickel 1/4-20 into top side holes on seat and shelf. Top side of seat has the 2 latch mounting holes on left side of seat if looking from the rounded seat front (as shown below).

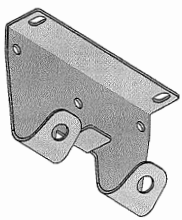


Shelf

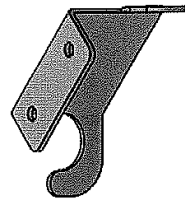


Seat

Step 7b: Assemble the Shelf Side Hooks(2 Per Shelf), to underside of Shelf on each side. Fasten Shelf Side Hooks to Shelf with #19 Joint Connector Bolt - Nickel 1/4-20. Hand tighten at this point. Assemble Shelf Back Hook to underside of Shelf in 2 remaining back holes with same Bolt. NOTE: Please see picture on cover page for correct hook orientation.



Shelf Side Hook



Shelf Back Hook

Step 7c: Install Shelf with assembled hooks into locker Side Panel Grid. The shelves need to be mounted at the same height across the locker. Use #17 Joint Connector Nut - Nickel 1/4-20 and #19 Joint Connected Bolt - Nickel 1/4-20 to bolt through the Side Shelf Hooks between two lockers. At the end of locker run use Shelf End Plate on outside of Side Panel Grid.

Assembly



Installed Shelf
Side Hook
Closeup



Shelf End Plate -
installed on Side
Panel grid

Step 7d: Assemble one of the Seat Hinges to underside of Seat, fasten using #19 Joint Connector Bolt - Nickel 1/4-20. Hinges should be oriented with wire tip pointing out away from seat. Assemble Seat Latch to underside of seat, fasten with #19 Joint Connector Bolt - Nickel 1/4-20. Latch return should be flush with outside edge of seat. See photo below. Insert the one attached Seat Hinge Pin into the Side Panel frame. As one person holds the Seat a second person can insert the other Seat Hinge into the opposite Side Panel and then fasten Seat Hinge to Seat.

Seat Latch and Hinge
Illustration - Seat is
shown mounted into
Side Panel frames.

