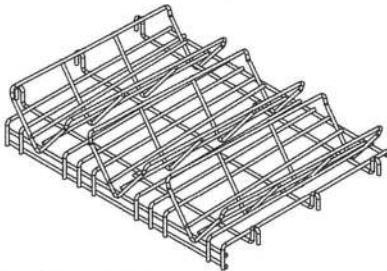
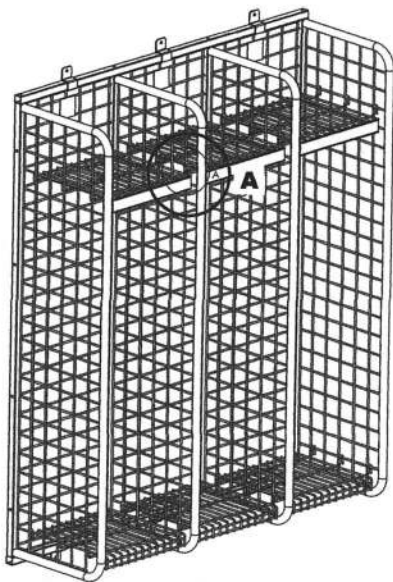
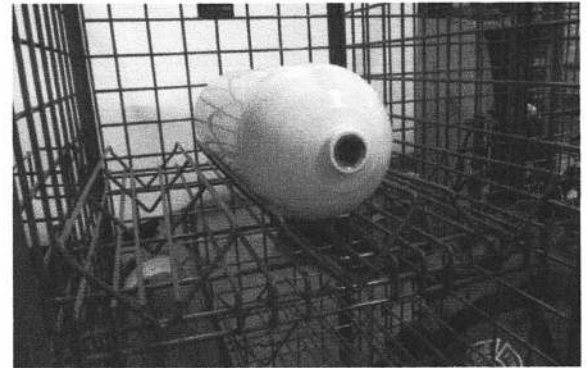


*Available for 24" wide lockers only

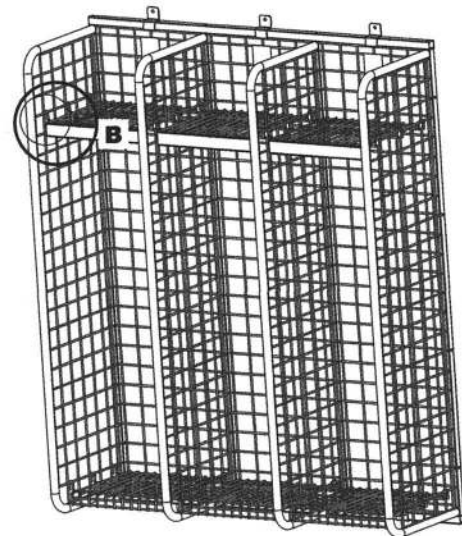
Install the shelf into unit as shown below. The hooks on the shelves get placed over the horizontal wires on the side panels. The left side hook will be placed behind the first vertical side panel wire. The right side shelf hook will be placed in front of the first vertical wire.



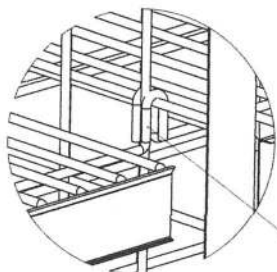
BOTTLE SHELF
QTY - PER ORDER



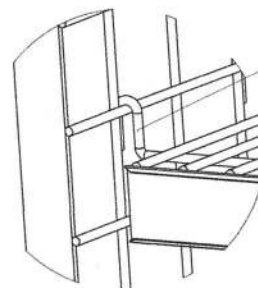
DETAIL A



LEFT SIDE OF SHELF
THE SHELF WIRE GOES BEHIND
THE FIRST VERTICAL WIRE



RIGHT SIDE OF SHELF
THE SHELF WIRE GOES IN FRONT
OF FIRST VERTICAL WIRE



DETAIL B

THANK YOU FOR CHOOSING GEARGRID for smarter, stronger, storage solutions.

670 SW 15th Street, Forest Lake, MN 55025 | Toll Free: 888-643-6694 | 651-464-4468 | Fax: 651-464-4780
sales@GearGrid.com | www.geargridcorp.com