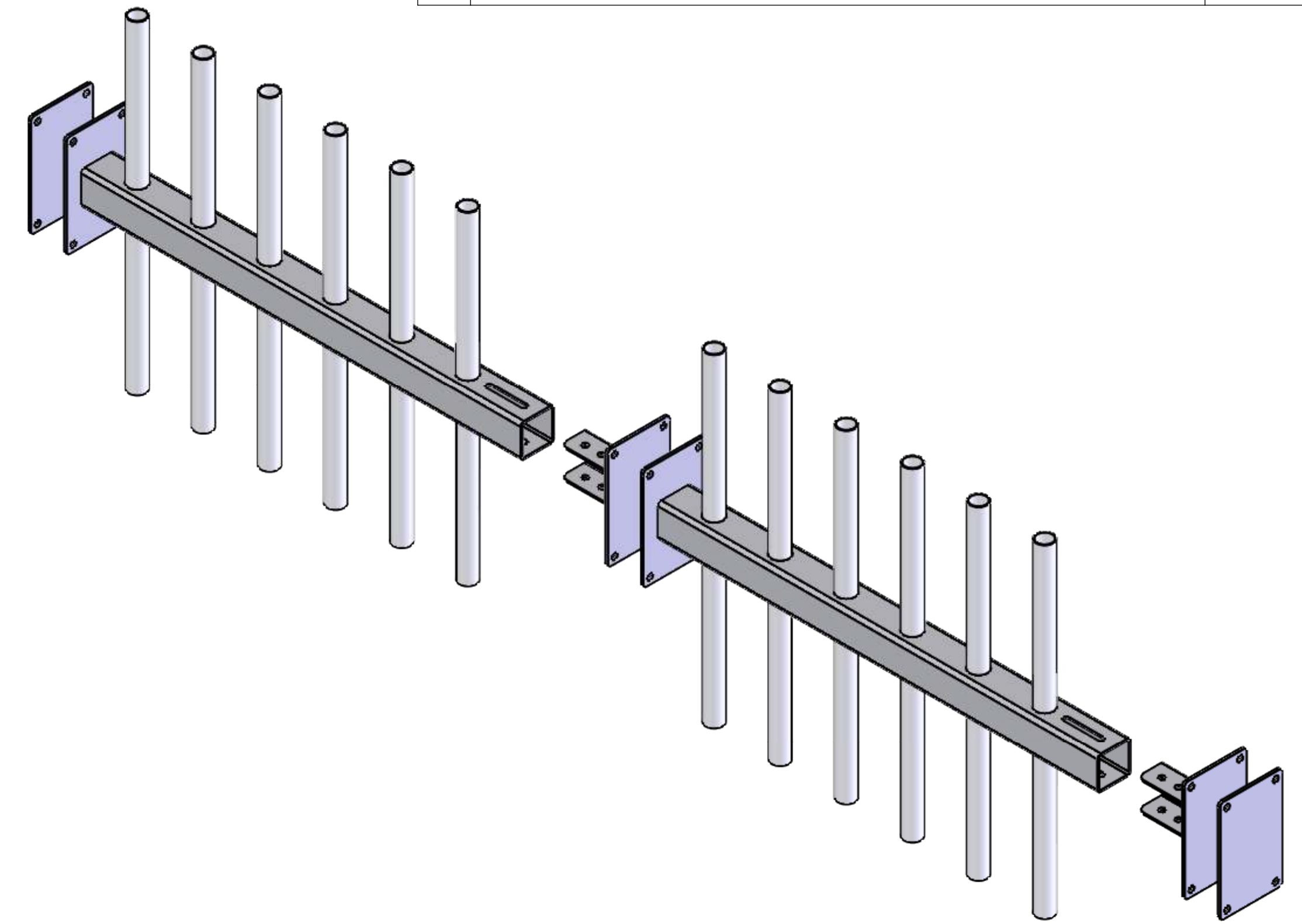
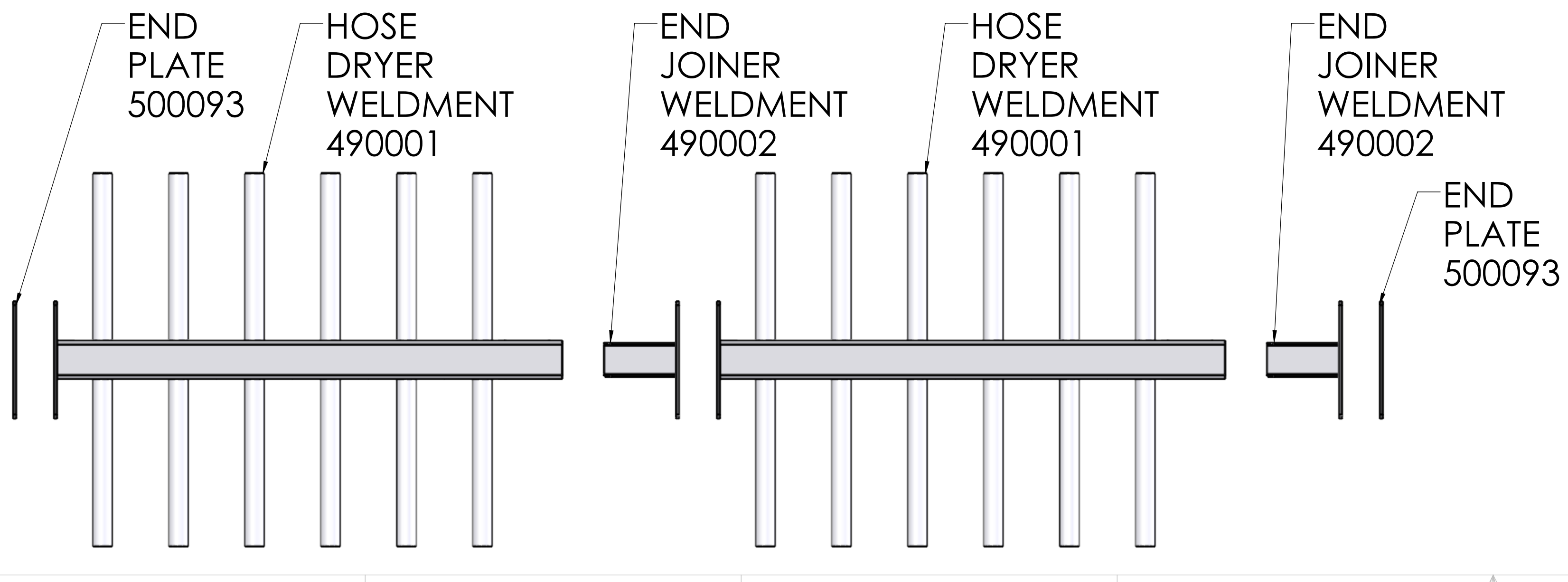




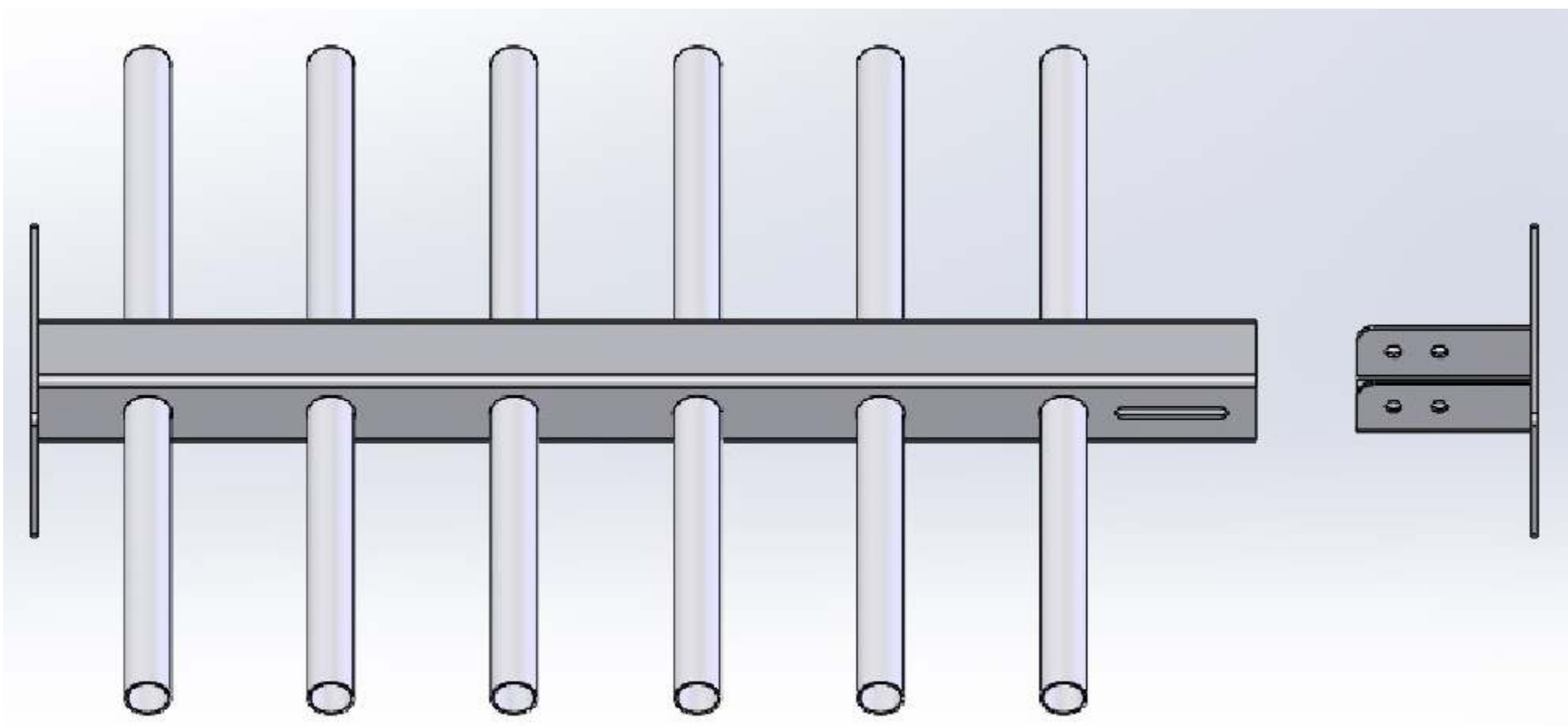
REV	DESCRIPTION	DATE
01	INITIAL RELEASE	05/11/2020



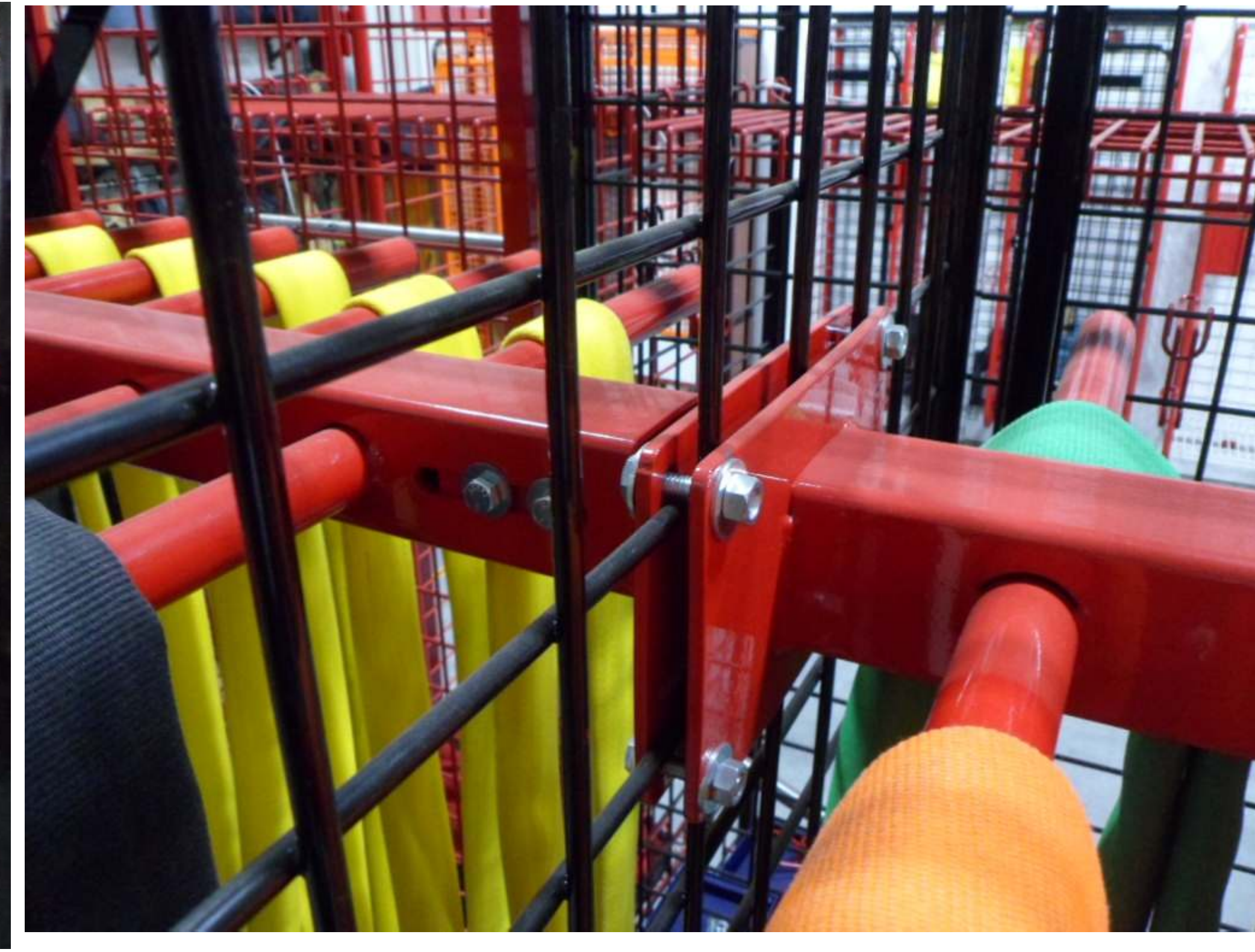
TOP VIEW OF DOUBLE BAY SERPENTINE HOSE DRYER



GEARGRID <small>PROPRIETARY AND CONFIDENTIAL</small> <small>THE INFORMATION CONTAINED IN THIS DRAWING IS THE SOLE PROPERTY OF GEARGRID CORPORATION. ANY REPRODUCTION IN PART OR AS A WHOLE WITHOUT THE WRITTEN PERMISSION OF GEARGRID CORPORATION IS PROHIBITED.</small> <small>INTERPRET DIM AND TOLERANCE PER ASME Y14.5M-1994</small> <small>THIRD ANGLE PROJECTION</small>	<small>ENGINEER</small> <small>UNLESS OTHERWISE SPECIFIED:</small> <small>DIMENSIONS ARE IN INCHES</small> <small>ANGLE MACHINED ±.5°</small> <small>ANGLE FORMED ±1°</small> <small>TWO PLACE .XX ±.03</small> <small>THREE PLACE .XXX ±.010</small> <small>HOLE Ø ±.005</small> <small>NATIONAL REF CUT SHEET</small> <small>FINISH SEE NOTES</small>	<small>DRAWN</small> LUKE B. <small>NAME</small> <small>DATE</small> 5-11-2020 <small>TITLE</small> Double Bay Assembly <small>SIZE</small> PART NO. 490201 <small>DO NOT SCALE DRAWING</small> SHEET 1 OF 3
	<small>REVISIONS</small> <small>REV</small> 01 <small>DATE</small> 05/11/2020	<small>REV</small>



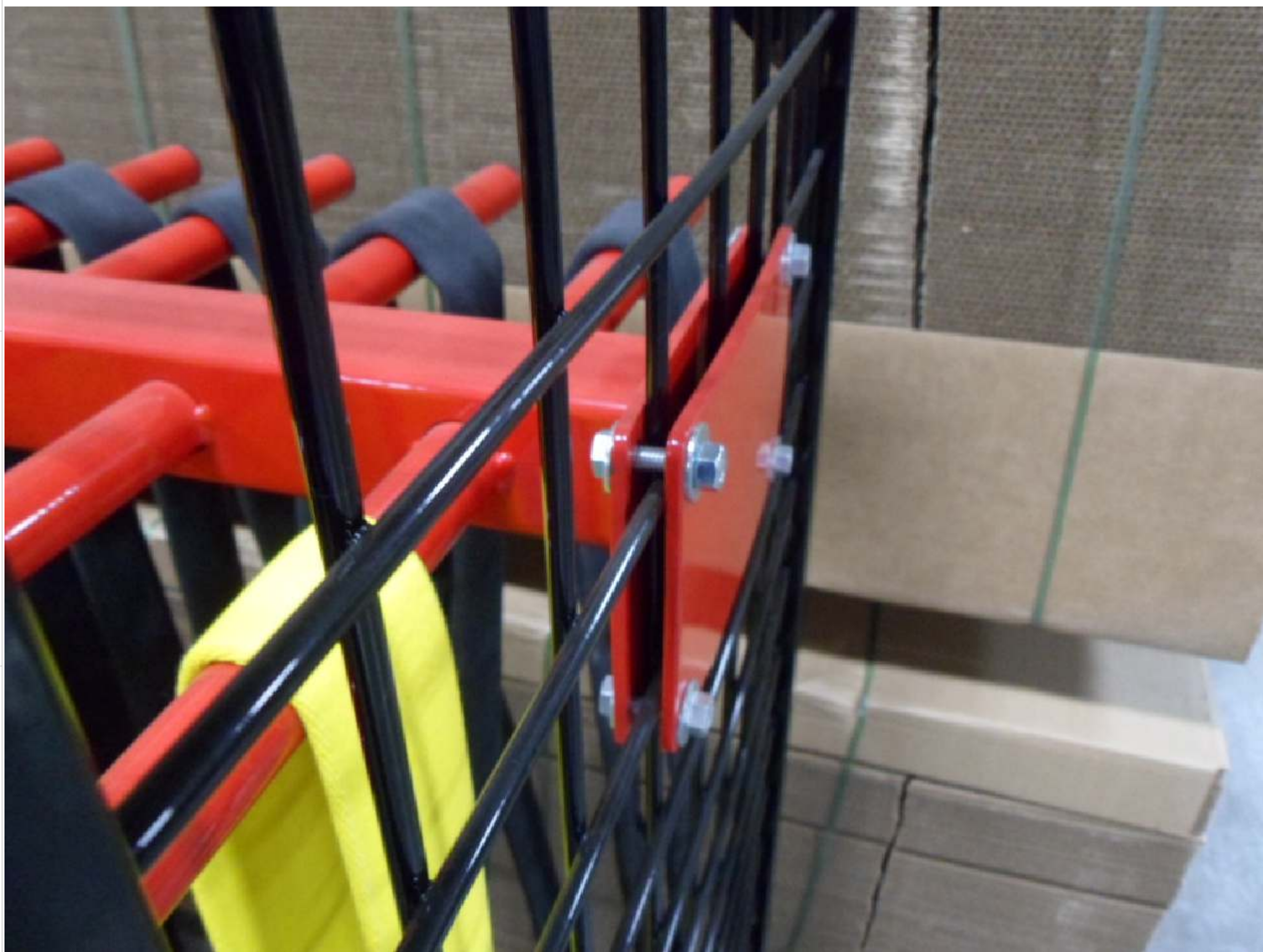
BEFORE BOLTING IN HOSE DRYER WELDMENT INTO THE FIRST BAY SLIDE THE END JOINER INTO THE HOSE DRYER WELDMENT AS SHOWN. IF THIS IS NOT DONE YOU WON'T BE ABLE TO INSTALL THE END JOINER ONCE IN THE BAY.



STEP 1:
BOLT END PLATE AND HOSE DRYER WELDMENT TOGETHER ON THE LEFT SIDE OF UNIT AS SHOWN USING THE SUPPLIED 5/16-18 X 1-1/4" BOLTS, NUTS, AND WASHERS. (WASHERS BOTH SIDES)

STEP 2:
SLIDE THE NEXT HOSE DRYER WELDMENT AND END JOINER TOGETHER FOR THE SECOND BAY. BOLT THE END JOINER AND HOSE DRYER WELDMENT FROM BAY 1 TO BAY 2 AS SHOWN USING THE SAME HARDWARE AS THE FIRST BAY.

GEARGRID		NAME	DATE	TITLE:
DRAWN		ENGINEER	01/01/18	Double Bay Assembly
<small>PROPRIETARY AND CONFIDENTIAL THE INFORMATION CONTAINED IN THIS DRAWING IS THE SOLE PROPERTY OF GEARGRID CORPORATION. ANY REPRODUCTION IN PART OR AS A WHOLE WITHOUT THE WRITTEN PERMISSION OF GEARGRID CORPORATION IS PROHIBITED.</small>		<small>UNLESS OTHERWISE SPECIFIED: DIMENSIONS ARE IN INCHES TOLERANCES: ANGLE MACHINED ±.5" ANGLE FORMED ±1" TWO PLACE .XX ±.03 THREE PLACE .XXX ±.010 HOLE Ø ±.005</small>		SIZE
<small>INTERPRET DIM AND TOLERANCE PER ASME Y14.5M-1994 THIRD ANGLE PROJECTION</small>		<small>WASHERS REF CUT SHEET FINISH SEE NOTES</small>		PART NO. D 490201 REV
				DO NOT SCALE DRAWING SHEET 2 OF 3



STEP 3:
BOLT THE END JOINER AND END PLATE TOGETHER AS SHOWN USING THE 5/16-18 X 1-1/4" BOLTS, WASHERS, AND NUTS.



STEP 4:
BOLT END JOINERS AND HOSE DRYER WELDMENTS TOGETHER AS SHOWN USING THE SUPPLIED 5/16-18 X 3/4" BOLTS AND WASHERS



STEP 5:
INSERT PLASTIC CAPS

GEARGRID		NAME	DATE	TITLE:
<small> PROPRIETARY AND CONFIDENTIAL THE INFORMATION CONTAINED IN THIS DRAWING IS THE SOLE PROPERTY OF GEARGRID CORPORATION. ANY REPRODUCTION IN PART OR AS A WHOLE WITHOUT THE WRITTEN PERMISSION OF GEARGRID CORPORATION IS PROHIBITED. </small>		ENGINEER	01/01/18	Double Bay Assembly
<small> UNLESS OTHERWISE SPECIFIED: DIMENSIONS ARE IN INCHES TOLERANCES: ANGLE MACHINED ±.5" ANGLE FORMED ±1" TWO PLACE .XX ±.03 THREE PLACE .XXX ±.010 HOLE Ø ±.005 </small>		INTERPRET DIM AND TOLERANCE PER ASME Y14.5M-1994	THIRD ANGLE PROJECTION	SIZE PART NO. REV
<small> FINISH SEE NOTES </small>		REF CUT SHEET		D 490201
				DO NOT SCALE DRAWING SHEET 3 OF 3