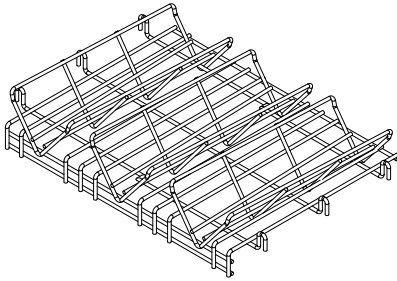
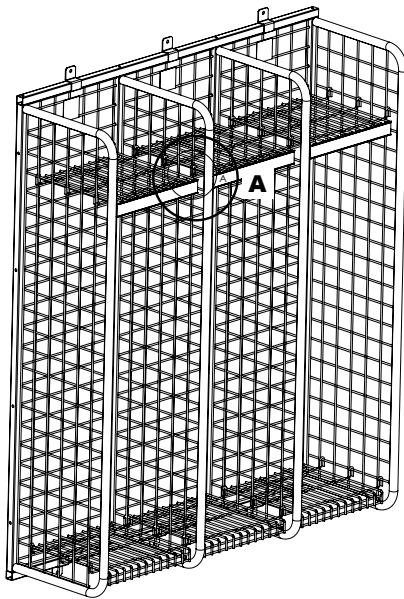


*Available for 24" wide lockers only

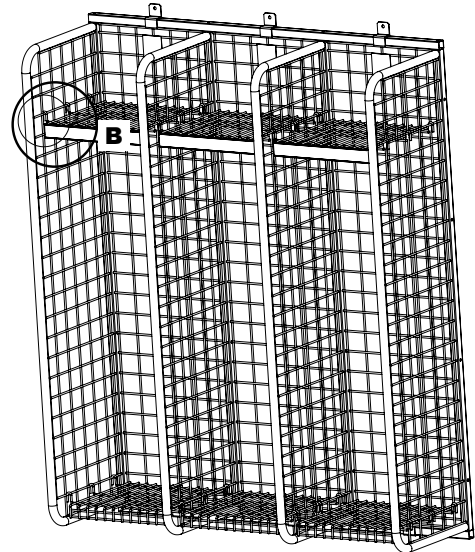
Install the shelf into unit as shown below. The hooks on the shelves get placed over the horizontal wires on the side panels. The left side hook will be placed behind the first vertical side panel wire. The right side shelf hook will be placed in front of the first vertical wire.



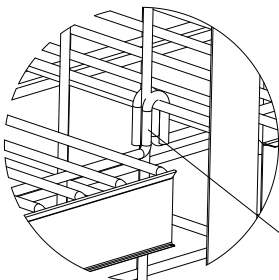
BOTTLE SHELF
QTY - PER ORDER



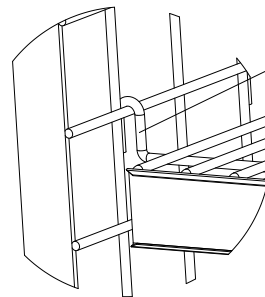
DETAIL A



LEFT SIDE OF SHELF
THE SHELF WIRE GOES BEHIND
THE FIRST VERTICAL WIRE



RIGHT SIDE OF SHELF
THE SHELF WIRE GOES IN FRONT
OF FIRST VERTICAL WIRE



DETAIL B

THANK YOU FOR CHOOSING GEARGRID for smarter, stronger, storage solutions.

670 SW 15th Street, Forest Lake, MN 55025 | Toll Free: 888-643-6694 | 651-464-4468 | Fax: 651-464-4780
sales@GearGrid.com | www.geargridcorp.com

*Available for 18", 20" and 24" wide lockers only

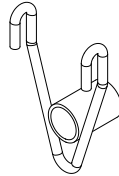
Tools Required:

- 7/16" Wrench
- Phillips Screwdriver

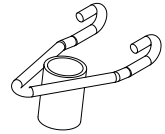
Parts



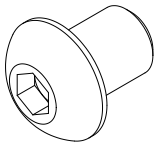
HANG BAR
QTY - 1



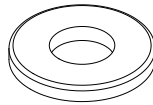
HANG BAR BRACKET
2.25 SPREAD
QTY - 1



HANG BAR BRACKET
1.625 SPREAD
QTY - 1



1/4-20 x 1" SCREW
QTY - 2



1/4" WASHER
QTY - 4



1/4-20 NUT
QTY - 2

THANK YOU FOR CHOOSING GEARGRID for smarter, stronger, storage solutions.

670 SW 15th Street, Forest Lake, MN 55025 | Toll Free: 888-643-6694 | 651-464-4468 | Fax: 651-464-4780
sales@GearGrid.com | www.geargridcorp.com

GEARHANGER™ Kit Installation

Step 1: Position hang bar as shown in the photos below.



Step 2: Insert screw and washer through bracket and place a washer and nut on the other side to secure bracket as shown in the photo below. Repeat for the other bracket.



For basic step-by-step installation of the Helmet Holder™, there are two wire form components that need to be assembled, an inside piece and an outside piece as shown below.

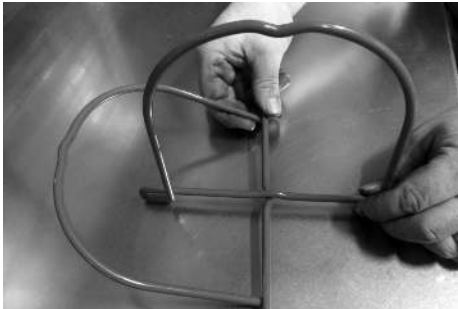


INSIDE COMPONENT

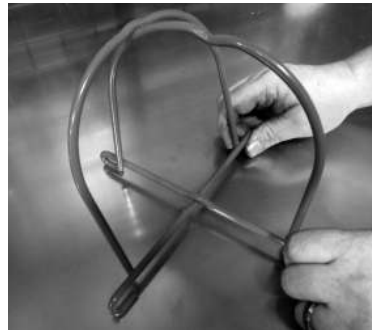


OUTSIDE COMPONENT

Step 1: Place the outside piece on the bottom and set the inside piece in place.



Step 2: Slide the outside piece up and over the inside piece to fit together as shown below.



Step 3: Take assembled Helmet Holder™ and squeeze the pieces together to set in position on the shelf.



Step 4: Now spread the pieces back to original form to lock into the shelf.



THANK YOU FOR CHOOSING GEARGRID for smarter, stronger, storage solutions.

670 SW 15th Street, Forest Lake, MN 55025 | Toll Free: 888-643-6694 | 651-464-4468 | Fax: 651-464-4780
sales@GearGrid.com | www.geargridcorp.com

*Available for 24" wide lockers only

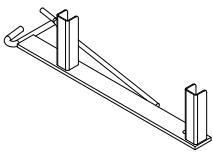
Tools Required:

- 7/16" Socket and ratchet
- 1/2" wrench

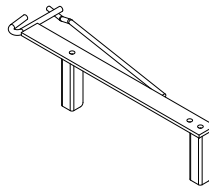


Parts

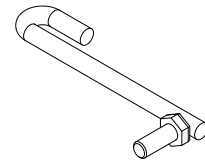
- ①4 BRACKET, L.H.
QTY - 1



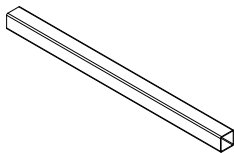
- ①5 BRACKET, R.H.
QTY - 1



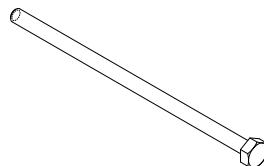
- ①6 J-HOOK
QTY - 2



- ①7 SHELF TUBE
QTY - 2



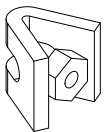
- ①8 1/4-20 x 4-1/2" BOLT
QTY - 4



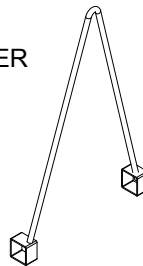
- ①9 1/4" WASHER
QTY - 4



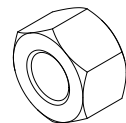
- ②0 WEDGE NUT
QTY - 4



- ②1 BOOK END
QTY - PER ORDER



- ②2 5/16-18 NYLOCK NUT
QTY - 2



THANK YOU FOR CHOOSING GEARGRID for smarter, stronger, storage solutions.

670 SW 15th Street, Forest Lake, MN 55025 | Toll Free: 888-643-6694 | 651-464-4468 | Fax: 651-464-4780
sales@GearGrid.com | www.geargridcorp.com

Hose Shelf Assembly

Step 1: Locate the following parts from the list:

Part	Description	Quantity
#18	1/4-20 x 4 1/2" Bolt	4
#19	1/4" Flat Washer	4
#20	Wedge Nut	4
#14	Bracket, L.H.	1
#15	Bracket, R.H.	1

Install bolt through the washer and through the outside of the side bracket. Place the wedge nut inside the U-Channel and thread the bolt in. Do this step for both sides, as shown in the photo below. Ensure the orientation of wedge nut is as shown. **Do not tighten bolts at this point.**



Step 2: Locate the following parts from the list:

Part	Description	Quantity
#21	Book End	1
#17	Shelf Tube	2

Slide shelf tubes over the U-Channels on one side of the bracket as shown in the photos below. Next, slide the book end over the shelf tubes with the book end angled in towards the center. Then, install the other bracket side over the other end of the shelf tubes. Push the hose shelf together and tighten the bolts. **Do not over tighten because deformation of the material will occur.**



Hose Shelf Installation

Step 1: Locate the following parts from the list:

Part	Description	Quantity
#16	J-Hook	2
#22	Nylock Nut	2

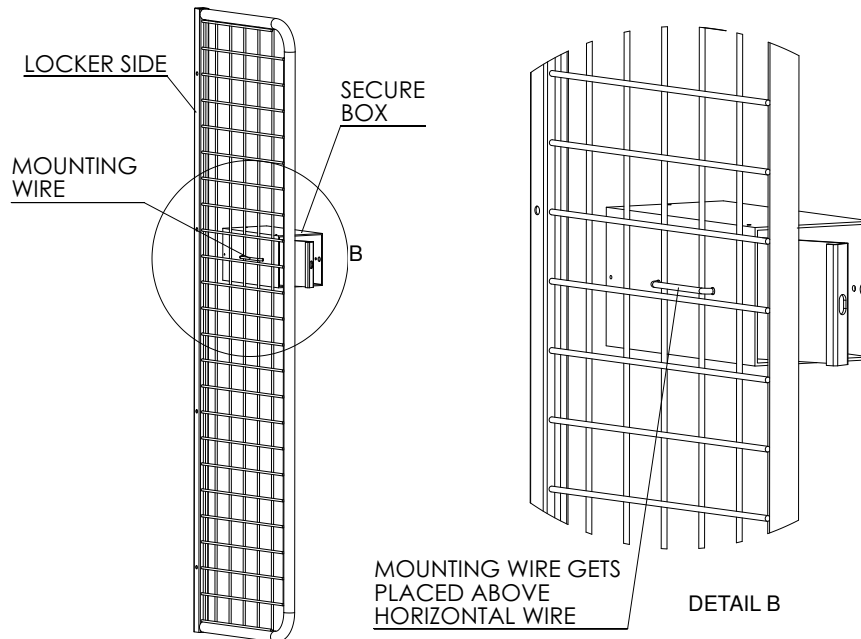
Install assembled hose shelf by hooking it to the back panel on the unit. Take one J-Hook and a nylock nut and fasten shelf to side panel as shown in the photos below. Install the second J-Hook the same way on the other side of the shelf.



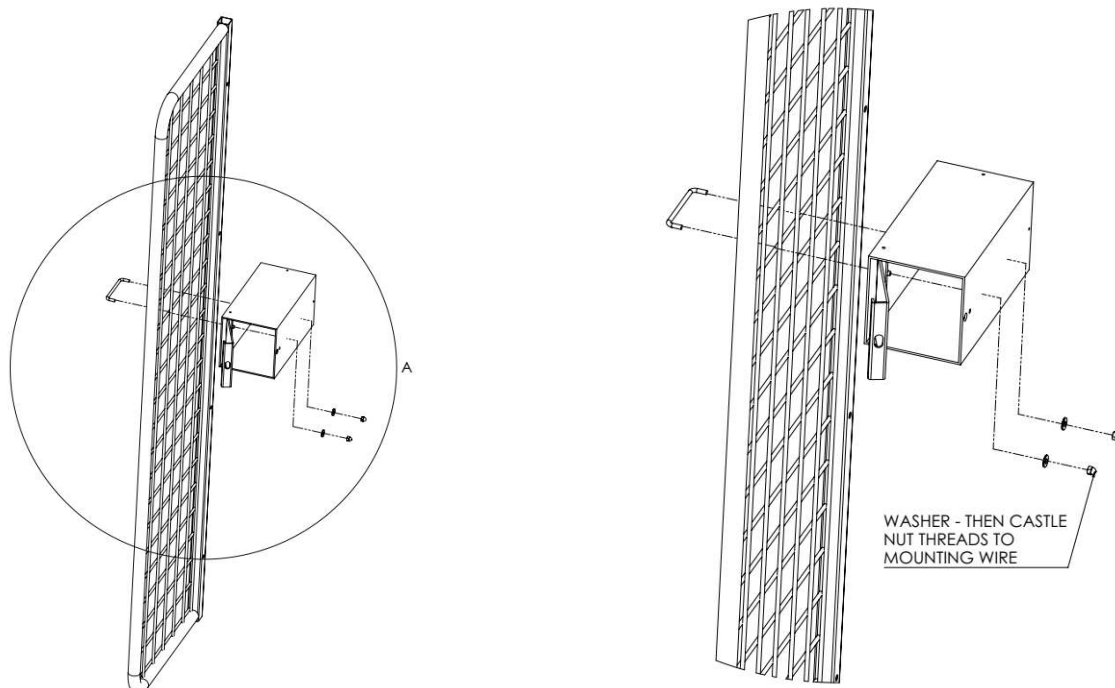
Tools Required:

- 7/16" Wrench

The diagram below shows the SECUREBOX™ installed to the locker side.



Open the SECUREBOX™ door and unthread the castle nuts from the mounting wire. Next follow the diagram below and position the mounting wire in the desired location you would like the box to be. Guide threaded ends through the holes in the box and thread the castle nuts back on and tighten with a 7/16" wrench.



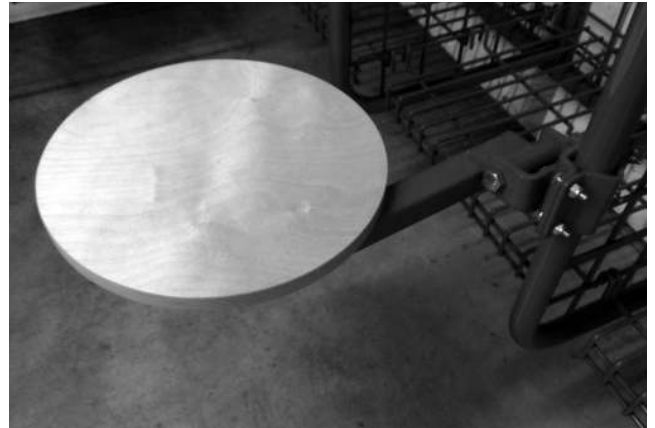
THANK YOU FOR CHOOSING GEARGRID for smarter, stronger, storage solutions.

670 SW 15th Street, Forest Lake, MN 55025 | Toll Free: 888-643-6694 | 651-464-4468 | Fax: 651-464-4780
sales@GearGrid.com | www.geargridcorp.com

*Cannot be used with door option

Tools Required:

- 7/16" Wrench
- 7/16" Socket and ratchet



Step 1: Place seat at desired height with the mounting brackets between the horizontal wires. Place the other side mounting bracket over welded bolt and thread on nut as shown in the photos below.



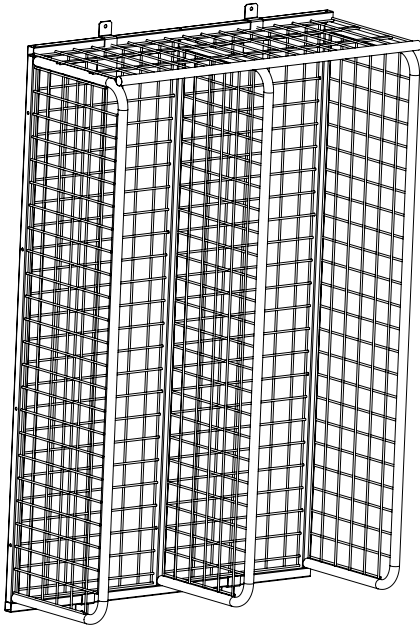
Step 2: Install the three 1/4-20" by 1" bolts to bracket and install 1/4-20" nuts as shown in the photo below.



THANK YOU FOR CHOOSING GEARGRID for smarter, stronger, storage solutions.

670 SW 15th Street, Forest Lake, MN 55025 | Toll Free: 888-643-6694 | 651-464-4468 | Fax: 651-464-4780
sales@GearGrid.com | www.geargridcorp.com

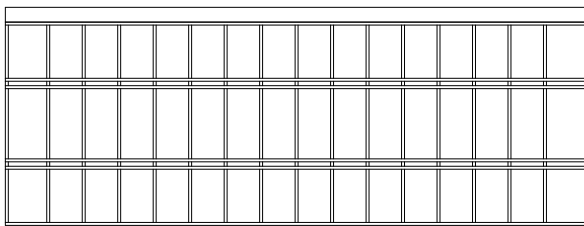
*Available for 18", 20" and 24" wide lockers only
Cannot be used with door option



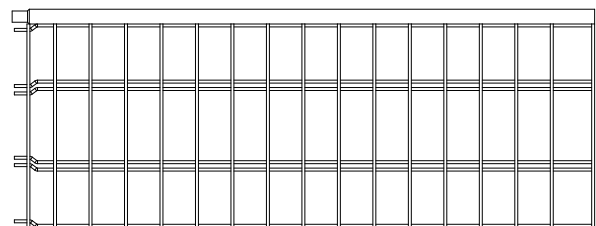
Tools Required:

- 7/16" Wrench
- 7/16" Socket and ratchet

The components below are used for the TOP-SIDE STORAGE™ shelf. They are comprised of two separate parts for many combinations of locker "runs." The TOP-SIDE STORAGE™ start is the component that starts the run on top of the locker system. The TOP-SIDE STORAGE™ extension is the component that mates to the TOP-SIDE STORAGE™ start for extended runs.



TOP-SIDE STORAGE™ START



TOP-SIDE STORAGE™ EXTENSION

THANK YOU FOR CHOOSING GEARGRID for smarter, stronger, storage solutions.

670 SW 15th Street, Forest Lake, MN 55025 | Toll Free: 888-643-6694 | 651-464-4468 | Fax: 651-464-4780
sales@GearGrid.com | www.geargridcorp.com

TOP-SIDE STORAGE™ Shelf Installation

Step 1: Place the TOP-SIDE STORAGE™ start on top of the locker with the long wires facing down on the left side of unit. Using the clamps and hardware provided fasten the unit down. There will be four bolts and clamps for one TOP-SIDE STORAGE™ start, two for each end of the unit.

The bolts will go through with a washer on top of double wires and a washer below the long double wires. Fasten with the supplied 1/4" nut and tighten. Use the same hardware for the other side of the start.

Step 2: If a TOP-SIDE STORAGE™ extension was ordered: Install it after the TOP-SIDE STORAGE™ start is installed by sliding the narrow end of the tube into the TOP-SIDE STORAGE™ start tube as shown below. Fasten the right-end down with the clamps and provided hardware per the instructions above.

NOTE: There will only be 2 clamps and bolts with each TOP-SIDE STORAGE™ extension.



Step 3: Insert black plastic plugs provided to cap the tube ends. Check that all clamps are secure to prevent shelf from sliding prior to loading shelf.