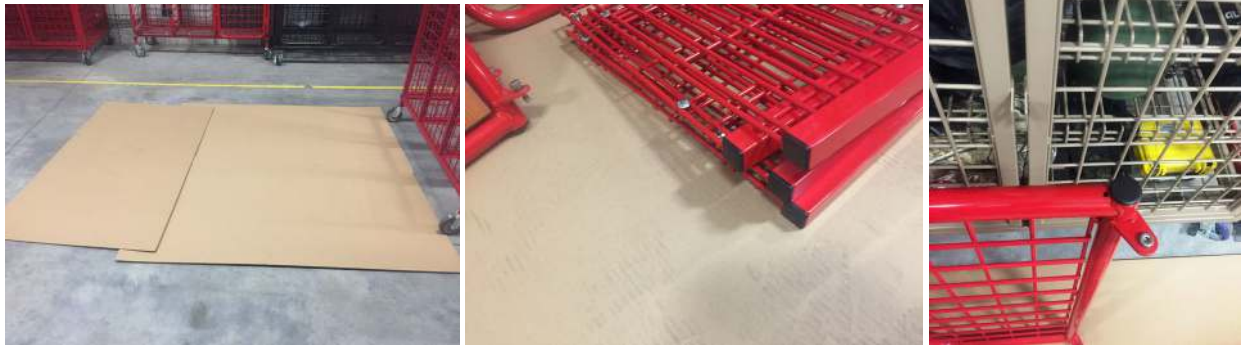




Assembly Instructions Double Tier Locker

Tools needed: Socket wrench, 7/16 socket, 1/2 socket, 9/16 socket, 5/8 socket, rubber mallet, Phillips screw driver, 1/2 wrench. **Minimum 2 people required for assembly**

Step 1. Lay cardboard down to protect your item. Next, insert all round, and square plugs.



Step 2) Grab both 3-starts, and (6) 1/4-20x5-1/2" bolts, (6) 1/4" washers, (6) wedge nuts. Insert bolt and washer into locker channel and thread into wedge nut. Do these steps for both 3-starts. (Notice orientation of wedge nuts)



Step 3. You will place three side w/doors, and one side w/out door just over the bottom 3-start channels, Doing this will allow you to open up the sides and inserting the back panels into the holes of the side tube easier. (see photo) (All back panels will have tabs that will line up to side tube holes.) Do these steps for all sides and back panels. Now you can flush up the 3-start to the bottom of the side tubes using a rubber mallet, and tighten hardware. Insert top 3-start and tighten hardware. (see photo) (side w/doors will have (4) tabs for attaching door, side w/out door will have no tabs for doors).

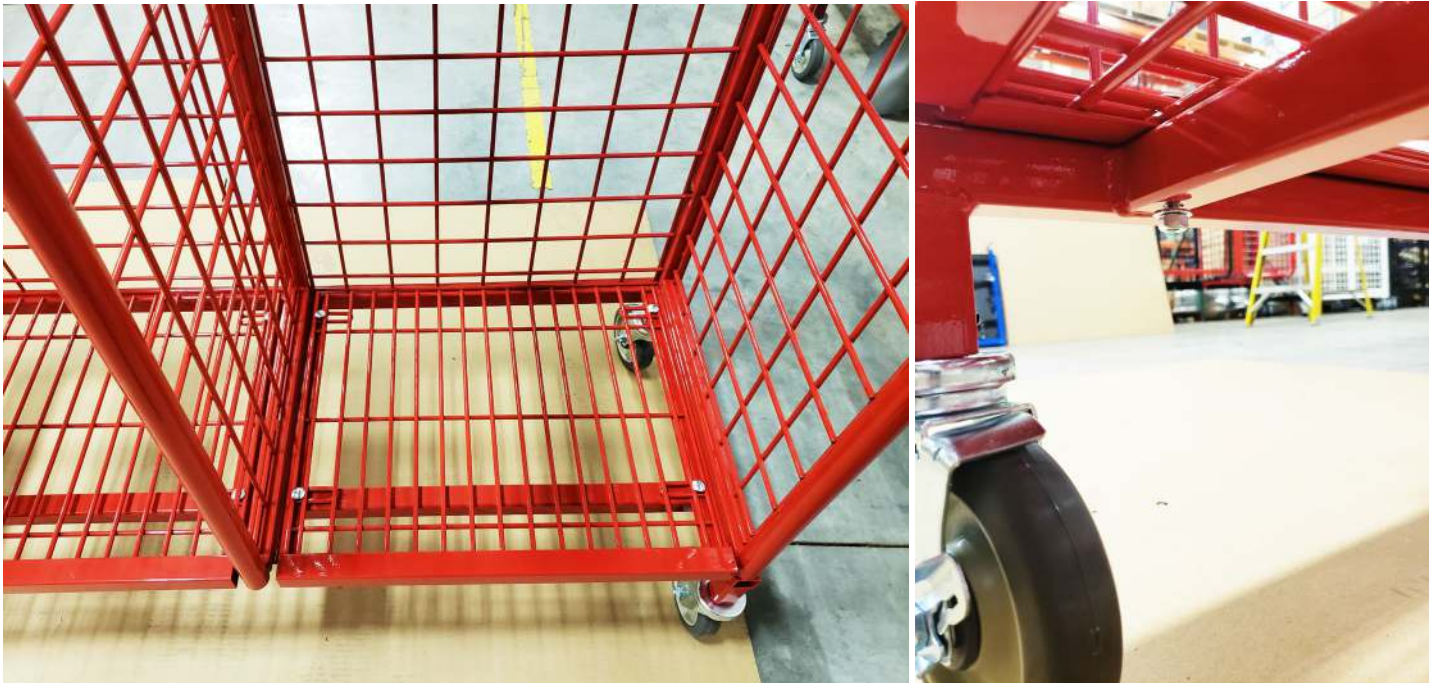


FOR MOBILE LOCKER ASSEMBLY

Step 3a. Grab base and place it as shown below, and install bolts, washers and wedge nuts. Next, grab sides and slide them partly over base channels, make sure the side bracket holes line up with holes in base. Revisit step 3 for installing backs. After backs are installed grab Start with bolts, washer and wedge nuts installed and slide start into top side channels. Now slide base and start flush up to sides and tighten hardware. You will need a socket extension when tightening hardware in the feet of the base. After hardware is tighten install casters and set screws into pre-drilled holes of base.



Step 3b. Lock rear casters, and stand locker system up. (Locking caster plates will keep lockers from rolling when standing up, also use safe lifting techniques to prevent injuries) Now once locker system is standing you can now install shelves. For bottom shelves you will be using 5/16-18 x 2-1/4" carriage bolts, washers, and 5/16-18 nuts, install these on front base tube only.



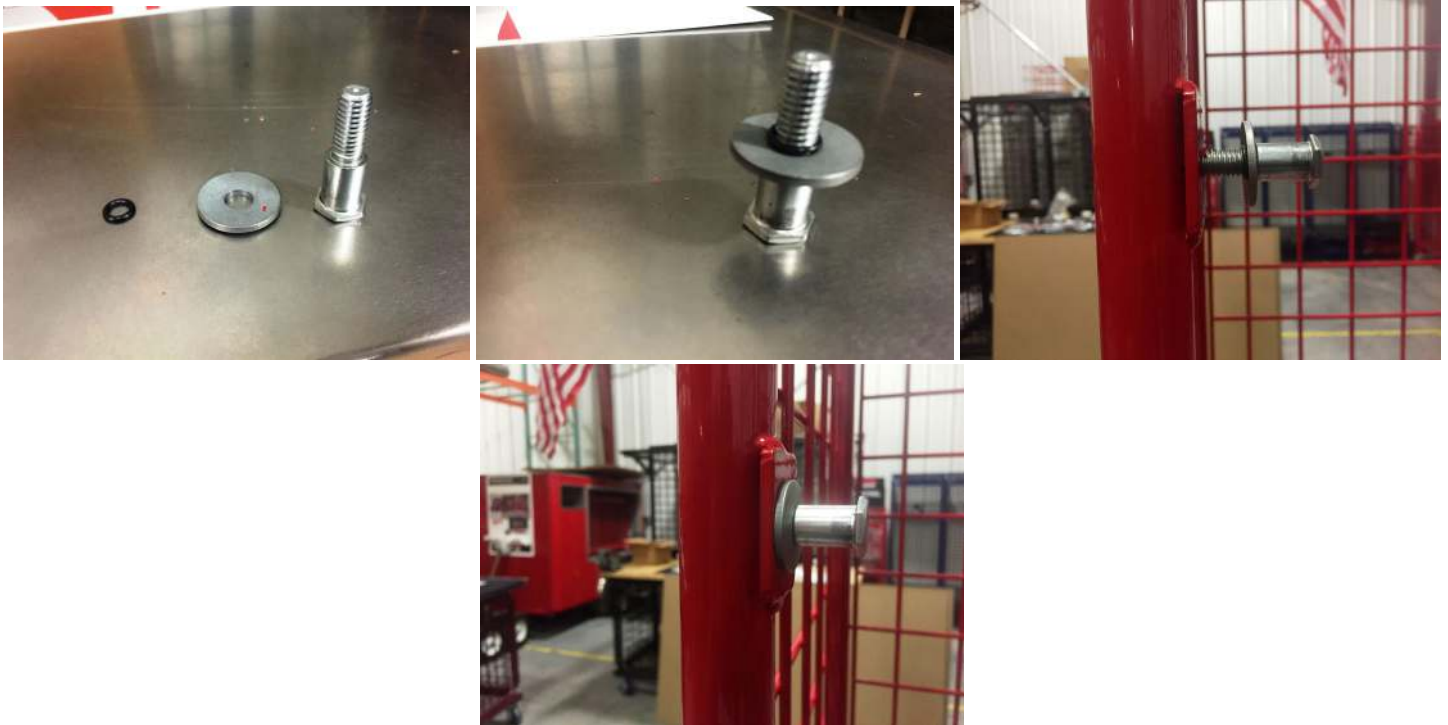
Step 4. Attaching shelves. Grab (1) shelf, (4) 1"x5/16-8 carriage bolts, (4) 5/16-18 nuts, and washers (not shown). Insert carriage bolt into shelf and through bracket, now thread on nut. Do these steps for all shelves. (There are (3) shelves per opening) Do not tighten hardware until all doors are installed. Leaving hardware loose will allow you some adjustability in the side panels for centering doors. Once your doors are centered you may now tighten hardware.



Step 5. Attaching locker doors to side tubes. First grab (4) .380 x .750 x .062 nylon washers and place them on the tabs of the side tubes. (See photo) Next grab (1) locker door and (2) 1/2" shoulder bolts and insert bolts through door tabs and attach door to side tube. (See photo) Next, grab (4) acorn nuts and thread onto shoulder bolts. (See photo) now tighten hardware. Do these steps for all doors.



Step 6. Attach striker bolt. Per side, grab (2) striker bolts and thread into side tube, then tighten striker bolts (see photo).



Step 7. Attaching door latch assembly per door. Place door latch to door as shown in the picture. Use two ¼-20 x ¾" fasteners and install to the bottom two holes as shown. Next install the thumb latch and the washer, position washer between the door latch and the thumb latch as shown in the image. Use the last ¼-20 x ¾" fastener to secure the thumb latch (do not over tighten this fastener as it could cause the thumb latch to not move)
Adjust door latch to match striker bolt if necessary.



Your locker is now assembled.

